

# ST-300 2-Shaft Shredder

The ST-300's applications include steel drums, auto and truck tires, castings, municipal & industrial waste, medical & hazardous waste, pallets, mattresses, wood waste, high volume production processing, e-waste, electronic scrap and various other applications.

It does more so you can **DO MORE!**

## STANDARD FEATURES

### CUTTING CHAMBER

The ST-300 shredders are available in three large cutting chamber sizes.

### DRIVE SYSTEM

The ST-300 shredder is available with two 75, 100 or 150 HP electric motors.

### KNIVES

Shred-Tech engineers design each knife profile and configuration to suit the application for maximum throughput and optimum shred size.

### CONTROL PANEL

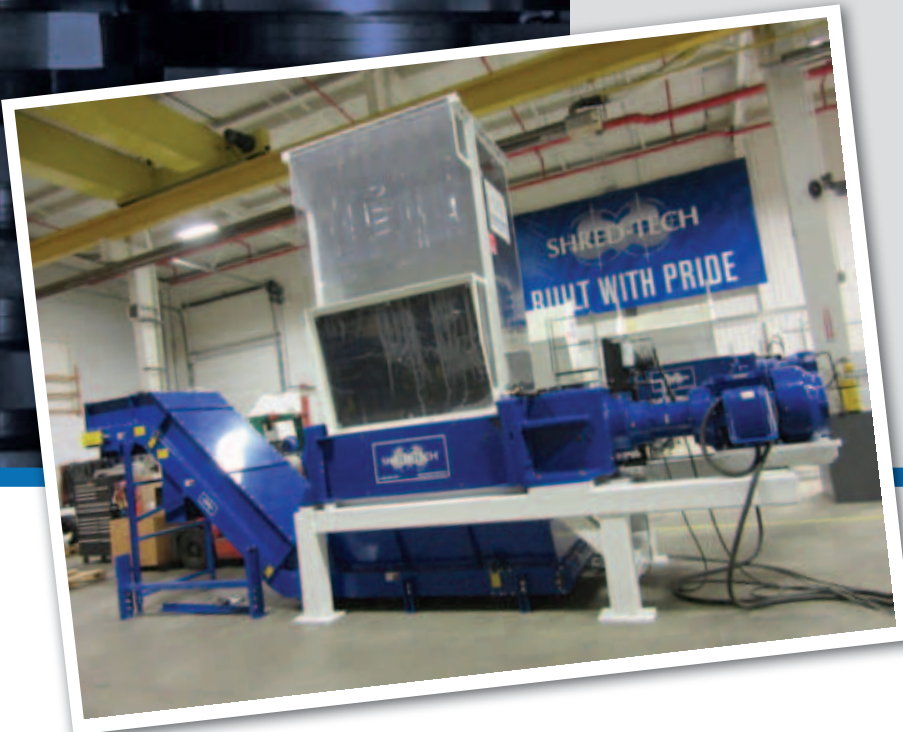
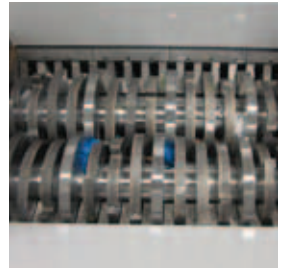
The ST-300 control panel, designed and fabricated by certified Shred-Tech technicians, features illuminated function buttons, keyed power switch, fused lockable disconnect, hour meter, and programmable logic controller for shredder functions, including knife reversal on overload.

### HOPPER AND STANDS

Quality is evident in the workmanship of Shred-Tech's extra heavy duty stand and hopper. As an option, the stand and hopper can be modified to suit the application or installation.

### HEX SHAFTS

The unique design of the machined hex shafts maximizes knife placement options and allows for easy knife removal and machine maintenance. Size for size, the hex shaft is several times stronger than a keyed shaft. The Shred-Tech hex shaft drive system offers the highest knife tip cutting force of any comparable shredder on the market.





# ST-300

## 2-Shaft Shredder

The ST-300 is designed for maximum use with a wide range of materials and optimum shred size.

SHREDDER TECHNICAL SPECIFICATIONS		ST-300ES	ST-300E	ST-300EL
<b>MEASUREMENTS</b>				
M/C Length	154"	166"	176"	
M/C Width	65"	65"	65"	
M/C Height	28"	28"	28"	
M/C Weight (lbs)	19,000	21,000	23,000	
Floor Space (sq. ft.)	70	75	79	
<b>PRODUCT SPECIFICATIONS</b>				
Drive	Electric	Electric	Electric	
Number of Motors	2	2	2	
Horsepower	100-200	100-200	100-200	
Voltage - 3 Phase	208/600	208/600	208/600	
Hertz	50/60	50/60	50/60	
Knife Thickness (STD) (mm)	41 48 60 73	41 48 60 73	41 48 60 73	
Number of Knives	35 28 22 18	43 34 27 22	50 40 31 26	
Knife Diameter	20"	20"	20"	
Distance Between Shafts	15"	15"	15"	
Cutting Chamber	53"x40"	65"x40"	75"x40"	
Discharge Height	48"	48"	48"	
Hopper Height	50"	50"	50"	
Stand Opening (Width)	51"	51"	51"	
Stand Opening (Length)	108"	120"	130"	
<b>OPTIONAL FEATURES</b>				
PLC Interfacing for Peripheral Equipment				
Custom Stands and Hoppers				
Feed and Discharge Conveyors				
Pneumatic or Hydraulic Ram				
Vibrating, Magnetic or Rotary Separation				
Reduced Voltage Starters				
Trailer Mounted				
Explosion Proof Motors				
Modem Capabilities				
Boom Crane and Working Platform				

### MAINTENANCE

Several design refinements proven successful to increase ease of maintenance and shredder durability in Shred-Tech's model line up have been incorporated into the ST-300 shredder. The new cast steel body design, in combination with bulkhead walls and labyrinth barriers at each end of the cutting chamber provide excellent bearing and seal protection, have resulted in superior durability and higher service factors. Sectional cleaning fingers, which are removable from the top, and a light weight chamber plate ensures cutting chamber disassembly is quick and easy. Bearing and seal replacement is easily completed without the need of gearbox disassembly.

Product specifications subject to change without notice.

>> All Shred-Tech Shredders are available under US Federal Supply Contract.® All rights reserved. Shred-Tech and Shred-Tech logo are registered trade-marks of Shred-Tech.

>> SHRED-TECH. COMPLETE INFORMATION DESTRUCTION AND RECYCLING SOLUTIONS.

W [www.shred-tech.com](http://www.shred-tech.com) | E [shred@shred-tech.com](mailto:shred@shred-tech.com) | T 800.465.3214 or 519.621.3560 | F 519.621.4288

SERVICE HOTLINE 877.566.2345 Rev 04/27/16

