

ST-300

2 - SHAFT SHREDDER

High performance and versatility makes this model ideal for any shredding company.

The ST-300's applications include steel drums, auto and truck tires, castings, municipal and industrial waste, medical & hazardous waste, pallets, mattresses, wood waste, high volume production processing, e-waste, metals and various other applications. It does more, so you can DO MORE!

STANDARD FEATURES

► CUTTING CHAMBER

The ST-300 shredders are available in three large cutting chamber sizes, 40" x 53", 40" x 65" and 40" x 76".

► KNIVES

Shred-Tech Engineers have designed each knife profile and configuration to suit the application for maximum throughput, and optimum shred size.

► DRIVE SYSTEM

The ST-300 shredder is available with dual 50, 75, 100 or 150HP electric motors.

► CONTROL PANEL

The ST-300 control panel, designed and fabricated by certified Shred-Tech technicians, features illuminated function buttons, keyed power switch, fused lockable disconnect, hour meter and a programmable logic controller for shredder functions, including knife reversal on overload.

► HOPPER AND STANDS

Quality is evident in the workmanship of Shred-Tech's extra heavy duty stand and hopper. As an option, the stand and hopper can be modified to suit the application or installation.

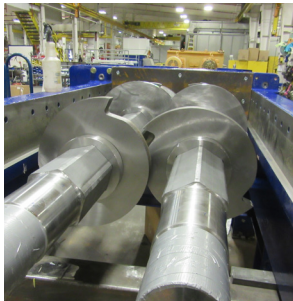
► HEX SHAFTS

The unique design of the machined hex shafts maximizes knife placement options and allows for easy knife removal and machine maintenance. Size for size, the hex shaft is several times stronger than a keyed shaft. The Shred-Tech hex shaft drive system, offers the highest knife-tip cutting force of any comparable shredder on the market.



The ST-300 is designed for maximum use with a wide range of materials and optimum shred size.





TECHNICAL SPECIFICATIONS	ST-300ES	ST-300E	ST-300EL
MEASUREMENTS			
M/C Length	154"	166"	176"
M/C Width	65"	65"	65"
M/C Height	28"	28"	28"
M/C Weight	19,000 lbs	21,000 lbs	23,000 lbs
Floor Space (sq.ft.)	70	75	79
PRODUCT SPECIFICATIONS			
Drive	Electric	Electric	Electric
Number of Motors	2	2	2
Horsepower	100-300	100-300	100-300
Voltage	208-600	208-600	208-600
Hertz	50/60	50/60	50/60
Knife Thickness (STD)	1 5/8", 1 7/8", 2 1/3", 2 7/8"		
Number of Knives	35, 28, 22, 18	43, 34, 27, 22	50, 40, 31, 26
Knife Diameter	20"	20"	20"
Hex Size	6 5/8"	6 5/8"	6 5/8"
Distance Between Shafts	15"	15"	15"
Cutting Chamber	40"x53"	40"x65"	40"x76"
Discharge Height	48"	48"	48"
Hopper Height	50"	50"	50"
Stand Opening (width)	51"	51"	51"
Stand Opening (length)	108"	120"	130"
OPTIONAL FEATURES			
<ul style="list-style-type: none"> PLC Interfacing for Peripheral Equipment Custom Stands and Hoppers Feed and Discharge Conveyors Pneumatic or Hydraulic Ram Explosion Proof Motors Modem Capabilities Magnetic or Eddy Current Separators Hydraulic Drive Options 			

ST-300

2 - SHAFT SHREDDER

The ST-300 is designed for maximum use with a wide range of materials and optimum shred size.



MAINTENANCE

Several design refinements proven successful to increase ease of maintenance and shredder durability in Shred-Tech's model line up have been incorporated into the ST-300 shredder. The new cast steel body design, in combination with bulkhead walls and labyrinth barriers at either end of the cutting chamber provide excellent bearing and seal protection, and have resulted in superior durability and higher service factors.

Sectional cleaning fingers, which are removable from the top, and a light weight chamber plate ensures cutting chamber disassembly is quick and easy. Bearing and seal replacement is easily completed without the need of gearbox disassembly.

COMPLETE INFORMATION DESTRUCTION AND RECYCLING SOLUTIONS

www.shred-tech.com | shred@shred-tech.com
 tf. 1.800.465.3214 | t. 519.621.3560 | f. 519.621.4288
 Service Hotline: 1.877.566.2345

